

Explore the UK's oldest botanic garden home to 5,000 types of plant

Annual Pass or become a Friend

Buy an annual pass for unlimited entry* to Oxford Botanic Garden and Arboretum for only £30, or £25 for concessions. Join the Friends for £38 for unlimited entry* to both our sites and other botanic gardens around the country. The membership includes invitations to private events and trips.

*Excludes some events.



The Botanic Garden Boutique

Home to a range of carefully curated, bespoke, botanically-inspired products, including the Botanic Garden's Physic Gin. You can browse and buy in person at the Garden, or click and collect online.



Why not visit our other site?

Set within historic Picturesque landscape, Harcourt Arboretum comprises over 130 acres containing some of the world's most endangered trees. Explore stunning wildflower meadows or stand under some of the oldest giant redwoods in the UK. Join us for family activities, workshops, and fairs.



So much more than a garden

About the Garden

Oxford Botanic Garden combines world-class science, natural beauty, and 400 years of history in one space. From the world's largest water lilies to the smallest alpine flowers, the Garden is overflowing with plants you may not find anywhere else.



Sharing the scientific wonder and importance of plants with the world

Oxford Botanic Garden and Arboretum, is focused on developing a vibrant research portfolio focusing on evolutionary genetics, speciation and *ex situ* conservation. We work closely with the University of Oxford's Department of Biology and partners further afield to produce world class research. Our Public Engagement Programme is also intrinsically linked to the research we do.



Want to know more?

Find out about both our sites, discover our incredible programme of events and courses, and sign up to our mailing list by scanning this QR code:



THE UNIVERSITY OF OXFORD BOTANIC GARDEN

GUIDE

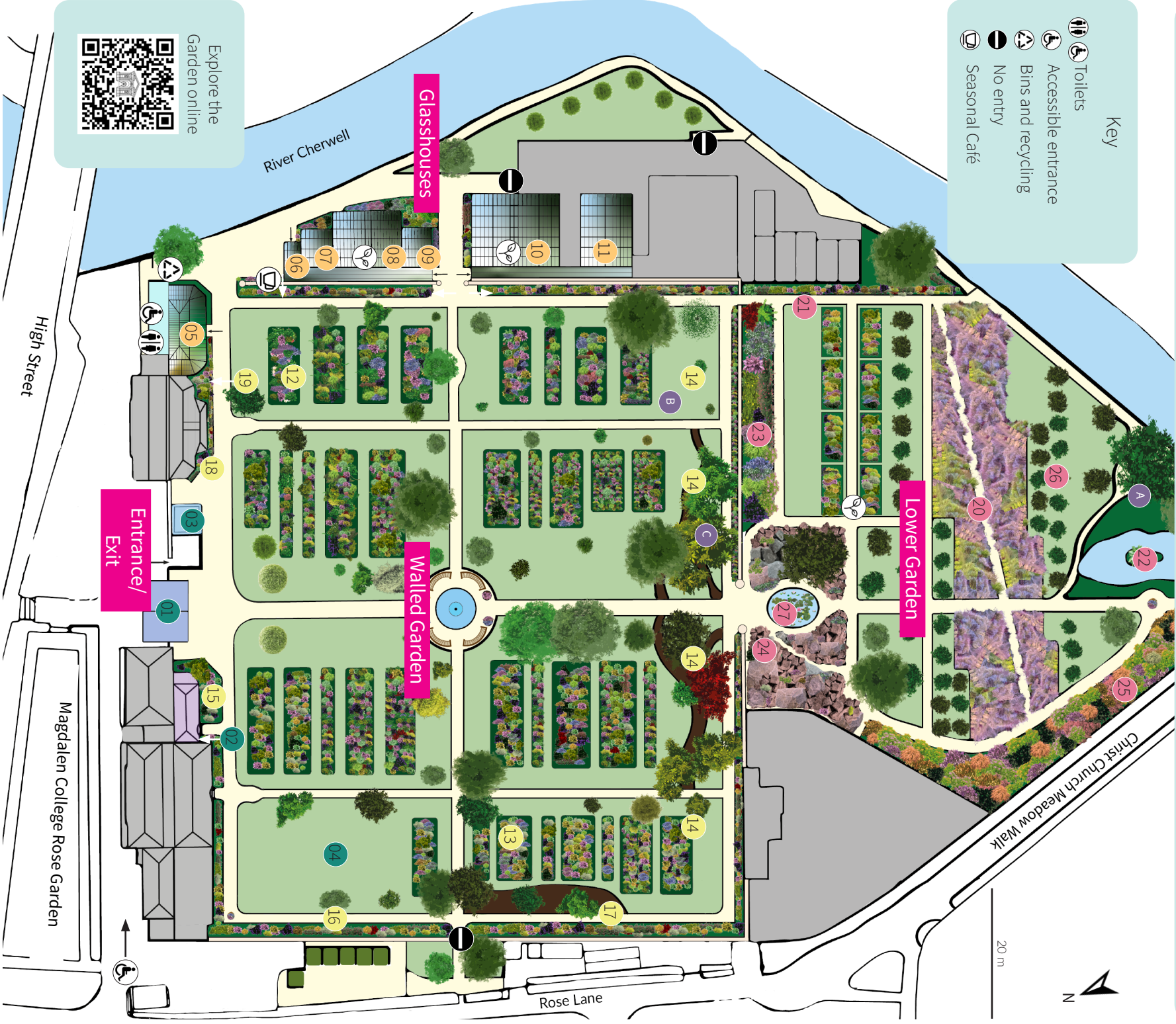
The UK's oldest botanic garden

Use this map to explore our unique collections:

- | | | | |
|---------------------------|-------------------------------|--------------------------------|----------------------|
| Landmarks | Glasshouses | Walled Garden | Lower Garden |
| 01 Danby Arch | 05 Conservatory | 12 Taxonomic Beds | 20 Merton Borders |
| 02 Herbarium Room | 06 Plants From High Places | 13 Medicinal Plants Collection | 21 Gin Border |
| 03 Welcome Centre | 07 Cloud Forest House | 14 Literary Garden | 22 Water Garden |
| 04 Events Lawn | 08 Water Lily House | 15 Bobart Collection | 23 Herbaceous Border |
| Literary Landmarks | 09 Carnivorous Plant House | 16 New Zealand Border | 24 Rock Garden |
| A Lyra's Bench | 10 Rainforest House | 17 Japan Border | 25 Autumn Border |
| B Tolkien's Tree | 11 Arid House | 18 South America Border | 26 Orchard |
| C Cheshire Cat | Plants that Changed the World | 19 South Africa Border | 27 Water Lily Pond |

Key

- Toilets
- Accessible entrance
- Bins and recycling
- No entry
- Seasonal Cafe



Explore the Garden online

Entrance/Exit

Magdalen College Rose Garden